



OLT Summer/Fall 2011 Annual Report



Notes from the Chair Dan Jones, Board Chair

Autumn Greetings to
the OLT Community!

You are a valued and diverse group – and ever evolving! You are “old-timers” who encompass a great deal of history, perspective and experience. You are newcomers lucky enough to have stumbled upon our hot springs, bats, and relaxed valley. You are from a wide range of ages and from every walk of life. Together you create our community. You come together at the hot springs in a variety of configurations – each day new guest pairings are created. Stories are told in the springs, the past is shared, new friendships made – new history unfolds each and every day. The joy in all this is that it is continuous.

OLT’s Board of Directors is particularly sensitive to the wide range of visitors and experiences embodied in our community and we strive to meet your expectations within the guidelines of our responsibility to the land trust’s mission and fiscal health. While our professional staff is busy operating the hot springs and land trust, we on the board are shepherding our resources and planning for a solid future that preserves the best of the past, accommodates an ever-changing world and maintains our financial strength. Two of our greatest assets are Neil and Terry, our founders, who have seen and heard it all and offer us the benefit of a balanced and reasoned perspective.

We are always happy to hear from you and we enjoy having a houseful of guests during our quarterly meetings. We meet on the third Saturday of January, April, July and October.

Buzz on the Ranch

By Mike May, OLT Staff

Things are abuzz at the OLT Everson Ranch. Over the summer, in my extra time, I have had the opportunity to begin renovation of one of the smaller structures on the ranch. Originally a generator shed for ranch operations, the dilapidated building just to the northeast of the main house is turning into a residence. The intent is to make the 200 square feet a cozy place for someone to stay and enjoy the ranch.

Initially there was a ‘problem’: the north wall of the building had already become a



residence for tens of thousands of honey bees. Unsure what to do, we reached out to several bee specialists and found a fine gentleman from Boulder to come pay us a visit. He explained our three basic options. One was to relocate the bees and risk losing up to 60% of the colony. Another option was to relocate the portion of the building housing them and risk losing up to 40% of the colony. The third option was to let them be (pun intended), and risk losing just 5% of their population. Our bee expert reviewed their behavior and we decided to go with what

is best for the bees. The colony currently occupies two stud bays in the wall, and accommodations have been made for them to expand into a third bay. *continued on page 3*

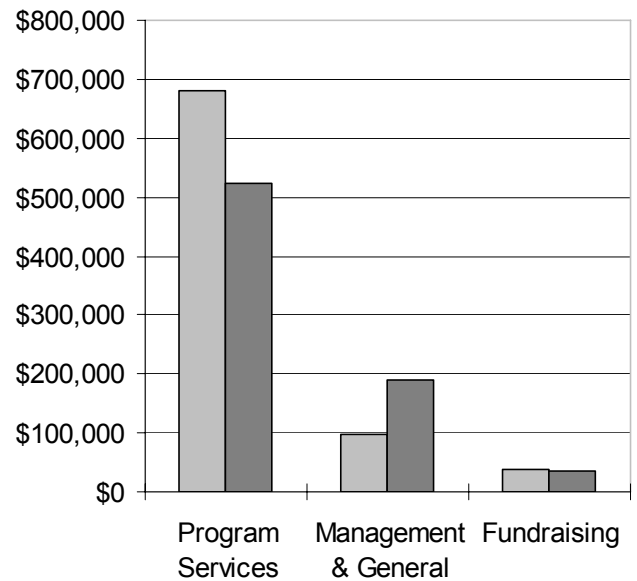
2010 Financial Reports

	<u>2010</u>	<u>2009</u>
Revenue and other support		
Admission and accommodations	\$699,336	\$601,778
Individual contributions	\$136,556	\$146,487
Merchandise sales	\$24,962	\$27,141
Ranch revenue	\$11,099	\$8,098
Special events	\$9,085	\$19,626
Investment income	\$732	\$3,961
Government grants	\$34,587	\$29,387
Foundation grants	\$1,500	\$15,500
Other income	\$0	\$672
Gain/Loss on Assets	(\$22,232)	\$0
In-kind	\$1,990	\$2,100
Total revenue and support - operating	\$897,615	\$854,750
Expense		
Program services	\$679,692	\$523,828
Management and general	\$96,493	\$188,984
Fundraising	\$37,101	\$35,366
Total operating expense	\$813,286	\$748,178
Change in net assets - operating	\$84,329	\$106,572
Gains/Losses on Conservation Easements		
	(\$852,343)	\$0
Donated property	\$0	\$1,986,000
Net assets, beginning of year	\$3,921,353	\$1,828,781
Net assets, end of year	\$3,153,339	\$3,921,353

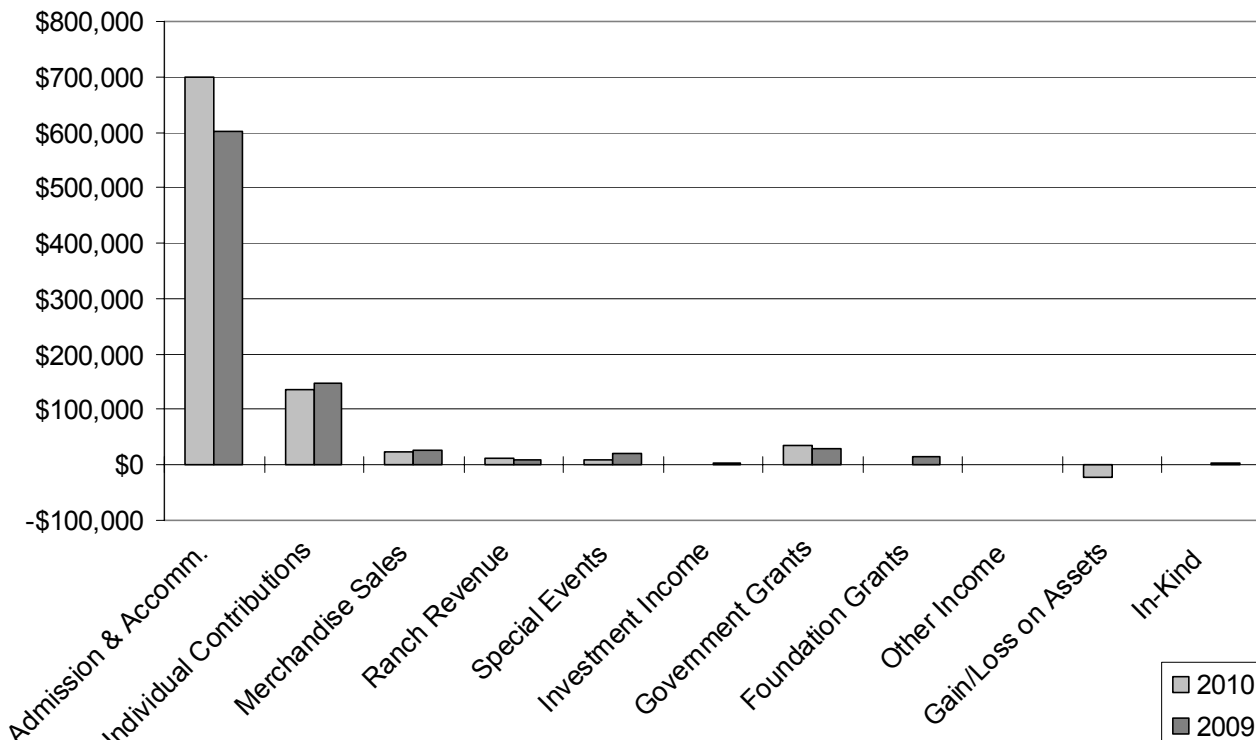
These reports are taken from the audited financial reports for 2010, prepared by an independent auditor. Some notes:

- In donating conservation easements on OLT property to The Nature Conservancy and Colorado Division of Wildlife, OLT absorbed a significant loss to the fixed asset value of the property, reflecting the development rights that are permanently restricted.
- The increase in Admission and Accommodation income reflects the fee increase instituted in 2010. Visitor use actually dropped about 6% from 2009 to 2010.
- The smaller Loss on Assets reflects the removal of the value of the old (replaced) Everson Ranch reservoir from the books.

2009-2010 Expenses



2009-2010 Income



NSLVC Roundtable

Part of the OLT mission is the “preservation of natural and biological resources of the Northern San Luis Valley for current and future generations,” including agricultural lands. To fulfill this, we are working with the agricultural community of the SLV in several ways. OLT has been instrumental in developing the Northern San Luis Valley Conservation Roundtable.

The NSLVC Roundtable is a forum of diverse stakeholders collaborating to conserve natural resources and local heritage in the Northern San Luis Valley. Participants include ranchers, farmers, commercial and private landowners, non-profit organizations, and local, state, and federal agencies. These members bring a wealth of knowledge and resources in land and water management, regulation, land management practices, conservation easements, wildlife and plant resources and management, historical and contemporary agricultural practices, land and water conservation practices, local history, and conservation education.

The Roundtable meets quarterly and currently carries out its mission through collaborative conservation projects, information sharing, and educational events on conservation-based topics pertinent to the Northern San Luis Valley, particularly affecting the San Luis Creek Watershed. Events held thus far include, “The Closed Basin Project” and “A Historical Perspective of Water in the San Luis Valley,” both of which were well attended. For more information on the Roundtable and how to become involved, please contact barb@olt.org.

buzz continued from page 1

I am happy about the decision to work around the bees and cherish the opportunity to turn this event into an educational experience. We have nicknamed the building ‘The Beehive,’ and have plans to possibly install a microphone into the third bay so that recordings and studies can be done. It is my hope that an infrared camera or some way of viewing the bees might also be possible. A glass viewport would be another option, but since some of the colony never sees daylight, there is hesitation to do this.

In the spirit of the OLT mission to preserve wildlife, I am happy to report we have done a good thing, and through education it can be a better thing as the renovation goes forward.

Change to Day Use Reservations

Many of you have experienced the issue of wanting to soak for the day – and learning we’re at capacity. We never like turning people away! We want as many of you to experience the hot springs as possible, while maintaining the ambiance. We are introducing a slight change to our Day Use reservation policy to help solve this issue. Any Day Use reservation may be canceled as late as close of business the night before your scheduled arrival. Any cancellation or no-show on the day of the reservation will result in a \$12 or \$15 charge, which is the regular Day Use rate for one person, depending on the season.

Have you bought your raffle tickets? There’s still time! The drawing will be held Thanksgiving weekend. They make great gifts! A prize list is at: http://olt.org/raffle_poster_2011.jpg

Rural Philanthropy Days

Jessica DuBoe, Board Member

Saguache County was happy to host the Community Resource Center's Rural Philanthropy Days event that took place from September 14-16 in the town of Saguache. There were over 200 participants representing non-profit organizations from across the San Luis Valley and the state, and other charitable donors and non-profit support organizations. This event is credited with bringing a significant influx of charitable

dollars into the areas where it is held, and local businesses got a great boost to the end of their tourist season by hosting these guests. OLT's Executive Director Suzanne Ewy and OLT Board Member Jessica DuBoe attended the event and gained much in the way of information, networking, and direction for soliciting future funds and establishing partnerships with funders and other organizations. Thanks to the Community Resource Center, organizers and the many local volunteers who helped to put OLT and Saguache County on the charitable donors map!

Meet Your New Members of the Board of Directors



Jessica DuBoe

Jessica was born and raised in Villa Grove and now lives at EarthArt Village. Along with her love of quiet rural living, she loves working with non-profits and her family at the Villa Grove Trade café, inn, coffeehouse, and general store. She manages the Trade, is board secretary for the Saguache County Sustainable Environment and Economic Development Group (ScSEED), is an associate in the fundraising and development firm Smoyer & Associates, and is the president of the Villa Grove Area Merchants Association. Since she grew up in the Soaking Pond (a.k.a. Party Pool), she's especially happy to now be a member of the OLT Board.

Jessica received her Political Science B.A. from Colorado State University in 2005. Her final semester was aboard the U.S.S. *Explorer* with the Institute for Shipboard Education program that took her around the world in 100 days. On this trip, she was introduced to Vietnam where she later spent one year teaching English and traveling around SE Asia. She feels that Ho Chi Minh City, while amazing, taught her the true value of clear air and water and the need to return to the paradise where she grew up, and devote herself to Saguache County. These experiences and more have solidified her unyielding belief in 'acting locally, thinking globally'; however, she now feels that what may be even more important in our time is to 'think locally, act globally.' She looks forward to participating in OLT's mission and helping to educate our guests on the value of localization.

Camille Richard

Camille Richard was born in Lawton, OK, but spent her childhood summers at the family cabin in Lake City, CO, just over the San Juan Mountains from the Valley, where she has been a permanent resident since 1995. She received her Bachelor's degree in 1984 from Trinity University in San Antonio, TX, but eventually returned to Colorado to do her Master's in Rangeland Management and Mine Land Reclamation at Colorado State University, graduating in 1990. She then embarked on an international career as a rangeland specialist, starting with Peace Corps in Nepal, and later working throughout the Himalayan regions of India, Pakistan, and Bhutan, the Tibetan regions within China, and in Mongolia. In her times stateside, her focus has been on the restoration of severely disturbed lands, one of which was Summitville Mine near South Fork, where she helped develop the re-vegetation plan.

Camille currently manages the Lake Fork Valley Conservancy, a non-profit organization dedicated to the stewardship of the environment and rural character of the Lake Fork Valley near Lake City. A visitor to Valley View since the early 1980's, she looks forward to helping OLT develop and implement a sustainable conservation plan for the property and surrounding environs.

Photo from 2011-2012 calendar, now on sale!



The Resource Development Committee (RDC) is seeking members!
Would you like to volunteer to help shape OLT?
More info is at:
http://olt.org/programs/volunteer/Committees_NO_last_names_2011_08_13.pdf

Email info@olt.org for more info

competent presence. Camp Host Peter Henry kept us entertained among his other duties. Lisa Gershkoff is helping us design a top notch volunteer program. Doug Bates is instrumental in helping us design a new database and website. Southwest Conservation Corps members helped rebuild our meanders, cleaned up the corral site, and pulled wire at the Ranch. And, as always, Colorado College sent some of the finest young folks on the planet to work with us. They cleaned up County Road GG, leveled campsites, watered plants at the reservoir and helped in the renovation at the Ranch. Wildlands Restoration Volunteers weeded and watered at the Ranch and leveled campsites. We are so lucky!



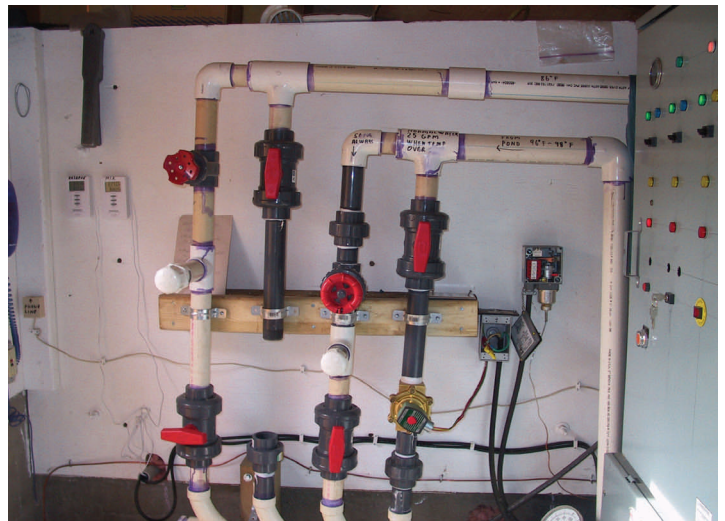
Reservoir at Everson Ranch

Everson Ranch

Last year we built the reservoir at Everson Ranch and this year we have begun the renovation of the ranch buildings. Many of you came for Ranch Tours this summer and saw some of our projects. We repaired the roof on the barn facing the house from the east and shored up the wood shed. Our favorite project is what we call The Beehive. (See article on page 1 by Mike May). We have also planted over 600 plants, given to us by the Colorado Division of Wildlife (CDOW), around the reservoir and along the creek to anchor the new work. This fall we will replant our hayfields with seed donated by CDOW. The ranch lessees will help us sow. Please come visit the ranch. It is hauntingly beautiful and you all are an integral part of it!

Survey, Cabins, Hot Water!

The survey results have been out now for several months. What we found was that our members love Orient Land Trust! There was a 98% satisfaction rate, with 86% highly satisfied! (See more about the survey on page 11.) You also told us that there are things you want us to work on, and we're listening. You asked for more hot water and we aim to deliver. To accomplish this, we must consider three budgets: money, human resources, and electricity. We always have to fit our projects into the finite electricity that we generate with our hydroelectric generator, which generates a maximum of 60 KW. We use all that electricity in the winter. The five cabins and Oak House use electric heat. You may have noticed that if everyone turns up the heat, the hot tub gets cooler. To create more hot water and a better hot tub, as we have done in all the newer buildings such as the Welcome Center and both restrooms, we have put geothermal in the Sunset house, saving 6 KW. We will next renovate the cabins to utilize the hot spring water for heating. We will remove the present floors, backfill the cavity under the floor, install a vapor barrier with insulation, lay piping throughout the floor area, and pour concrete. This will create a lovely warm environment for all your cold tootsies while saving about 25% of our electricity, which can then be used for the new hot tub! We will also be adding insulation and upgrading windows and doors in the cabins. We hope to have this project finished by next summer. The new hot tub will be on the 2012 Action Plan. Please give us your ideas - we love them!



Water and heating controls for the hot tub

Please Join Us in Preserving This Special Place

Terry & Neil Seitz, OLT Founders

We are asking you to please join Orient Land Trust today! Maybe you're already a member. If so, thank you very much, and please consider renewing or upgrading your membership. Perhaps you've let your membership lapse or have never joined. We understand that it's not always easy to balance the household budget, especially in these times, but we hope you'll decide that Orient Land Trust is important enough to give your support.

This year, 2011, Orient Land Trust enters its second decade of existence. OLT, like Valley View Hot Springs, is a unique and special entity. We're sure you won't find another land trust like it anywhere in the world. Its creation has been very exciting and an incredible learning experience for everyone involved.

OLT staff is frequently asked "What is Orient Land Trust?" Many people assume that OLT is some organization that just glommed onto Valley View, and isn't really related to it. Nothing could be further from the truth. OLT is what guarantees that Valley View will always be here, always be the magical place that it is today. How many times have you arrived at a favorite restaurant, open space, or even hot springs, and found that it was gone or drastically altered? Thanks to the "forever" aspect of OLT, that's not going to happen here.

We utilized two main tools to achieve this. First is the Nudist Deed Restriction, an actual restriction on the property deed that guarantees that nudity will always be allowed at Valley View. The second tool is the conservation easement which was donated to The Nature Conservancy by OLT. This easement protects the hot springs by preventing OLT from ever selling off any part of the property and from building outside of the currently developed areas (the "village"). But our goals in creating OLT extend beyond just protecting Valley View itself.

Orient Land Trust's mission is to protect the resources of the northern San Luis Valley. This is a very broad and important undertaking. It involves preserving open space, wildlife, night skies, water and, encompassing all of this, agriculture, which is the cultural heritage of the valley. There

are those who feel that these qualities of the valley make no difference to the hot springs. But what is the place called? VALLEY VIEW! If the valley changes, the hot springs change too!

Orient Land Trust is working with several other area land trusts, combining forces to more effectively achieve these goals. In the years to come, OLT will likely be involved in some interesting collaborative projects of great importance in preserving quality of life in the San Luis Valley.

OLT is working on projects of special importance to our visitors due to their close proximity to Valley View. Most recently these include:

- Everson Ranch - OLT continues to improve the land and waterways on the ranch, and is beginning restoration of the historic ranch structures (see article p.1).
- Orient Mine - The self-guided history tour of the Orient Mine, including interpretive signs and brochure, is now complete.
- The "Three Mile View" - OLT is making annual payments on the property it purchased directly west of Valley View. This parcel completes a view corridor along County Road GG extending half-way across the valley.

Becoming a member makes you a part of this great big vision. It also helps you enjoy Valley View, with the benefit of being able to reserve space ahead and other benefits. Please join by making a tax-deductible contribution to Orient Land Trust. You can join online at www.olt.org or by using the form on the next page.



To join please use this form or visit www.olt.org and click "Please Support" PLEASE PRINT LEGIBLY

Circle one: \$35-Friend \$85-Supporter \$175-Patron \$300-Sponsor \$600-Benefactor Other \$ _____

Above reflects new membership levels effective January 1, 2012

Name _____ Date _____

2nd Name in Household _____

Mailing Address _____

City _____ State _____, Zip _____

E-mail Address _____

Check here if you want all communication by email Check here if your donation may be publicly acknowledged

Check enclosed Credit card - complete below Visa MasterCard Discover (Online donation will accept American Express)

Card holder's name as appears on card _____

Card Number _____ Expires _____ / _____

3 digit number on back: _____ Signature _____

Mail to: Orient Land Trust, PO Box 65, Villa Grove, CO 81155-0065
For more information: www.olt.org • info@olt.org • 719.256.4315
Thank you for your support! We welcome your comments!

All contributions are tax-deductible less value of any premium received.

✂-----✂-----✂

YOUR DONATION!

Your donation allows you to feel GREAT about protecting OLT environs, to receive the annual OLT newsletter, an invitation to member appreciation weekend, \$4 discount for a two hour quick dip, in addition to the following:

- **Friend (\$35 - \$84)** - the ability to make reservations one month in advance
- **Supporter (\$85 - \$174)** – the ability to make reservations two months in advance
- **Patron (\$175 - \$299)** – the ability to make reservations three months in advance
- **Sponsor (\$300 - \$599)** – the ability to make reservations three months in advance, always admitted for day use without reservation even when we are at quota
- **Benefactor (\$600 - \$999)** – the ability to make reservations three months in advance, always admitted for day use without reservation even when we are at quota, able to reserve any two accommodations or vehicle camp sites
- **Philanthropist (\$1000 & up)** – the ability to make reservations three months in advance, always admitted for day use without reservation even when we are at quota, able to reserve any two accommodations or vehicle camp sites

The Numbers This spring we conducted an online survey of visitors. It was distributed in person and via email, and responses gathered online. We want to thank all of you who set aside time and shared your collective wisdom. With a total of 995 participants answering 94 questions per survey, most of you spent 30 minutes to an hour, some up to 4 hours completing this survey. This shows us that you truly care about the future of this wonderful place. That is why surveying of guests is a continuous, ongoing process to aide dialogue with our main asset, all of you, while moving into the 21st century. The next survey you are asked to complete will be shorter, we promise! Due to limited newsletter space, here is a teaser of official survey results. More results are on our website!

- **651** The number of visitors surveyed who reside in the state of Colorado.
- **76** The percentage who said they felt "very comfortable" as a naturist at Valley View Hot Springs.
- **205** The number of visitors surveyed who have been visiting for 20 years or more.
- **98.5** The percentage who reported being either "satisfied" or "very satisfied" with their overall experience.

Enjoying Winter At Valley View

Why is Valley View Hot Springs so loved in the winter? A very close friend of mine is convinced it would be a cold and miserable time and won't try it. Then there is the contingent of people who ONLY come to Valley View in the winter because they like it so much better. These polarized opinions come from misunderstandings, assumptions, and especially not understanding how to properly use Valley View facilities in the winter. I have found that almost anyone can be warm and comfortable at Valley View in the winter. The people who visit in the winter tend to be some of the most passionate Valley View fans and therefore very fun and interesting to talk to.

Here are some tips and tricks to truly *enjoy* (not just endure) Valley View in the cold months. They are all important for the optimal experience, but you may find your own variations.

● **Use the sauna!** Except for the Top Pond, almost

everything at Valley View is within 5 minutes of the sauna. The sauna is the heart of winter comfort at Valley View. Cycle in and out of the sauna to get your core temperature up. If you feel chilled, stay in the sauna until you are completely warm. That might mean going out to the dressing area of the sauna or getting down in the plunge pool to slow heating, but then go back into the heat to continue to add to core temperature. Go back and forth until you are luxuriantly warm and relaxed. Then go out for another activity. If you get chilled, repeat the sauna routine. After a day or two, doing this repeatedly leads to a wonderful metabolic state that most people do not realize is possible. The key is to get your core temperature up, not just go in the sauna one time only until your skin is too hot and then leave.



Ice crystals cover trees and plants

● **Wear a warm robe (and nothing else).**

Dressing at a pond in winter is a long and chilly process and may cool you enough that it is difficult to easily or quickly warm up in the sauna. The fastest, easiest, and most comfortable way to dress in winter is in a big warm robe and slip-on shoes. Towel dry off as soon as you are out of water to keep your robe dry, then head

immediately to the sauna and get wrapped in toasty warmth. Elapsed time from Soaking Pond water to the sauna is about 3 minutes. If you want to wear a swimsuit, you should still use a robe but keep drying it out so it keeps you warmer. The heavy, hooded Valley View robes sold in the Welcome Center are excellent.

● **Use the hot tub, sauna, and Oak House.** In winter, people tend to congregate around the warmer activities, especially in evenings and on cloudy, rainy, or snowy days. This makes for a lot of emotional warmth as to augment the water and sauna.

● **Listen to music.** There is more live music played in the Oak House during the winter than summer, and

many weekend winter nights will have musicians jamming until quiet time. In the light and glow of the Oak House ambiance, with good people, good food, good music and a residual body warmth from the sauna, WARM is definitely the word that comes to mind. It is the Valley View magic in another form which is treasured by the people who know about it.

● **Enjoy the beauty.** When there is snow on the ground, Valley View is transformed. To sit in the hot tub with the grounds, hills, and mountains covered in snow is incredible. A lot of people have experienced hot tubs or even other hot springs in the snow but it does still not prepare them for the astonishing beauty of Valley View with snow on the ground.

● **Good footwear.** A good pair of slip-on shoes

works in winter to easily go from pool to sauna. Some people prefer more substantial footwear or even snow boots, but keep it simple.

- **Cook warm food.** Winter is the season to cook soups, chili, casseroles and the like. They keep you warmer both physically and emotionally.

- **Get your metabolism up!** The sauna is critical to comfort level in winter. Most people live in a very temperature-controlled environment and don't leave the 60°-80° F range often unless bundled up. This gradually inhibits full metabolism. When the body has to adapt to a much wider temperature range, the metabolism is also increased. In Scandinavia and other countries it is common to go directly from sauna to snow. A much gentler and still effective way to accomplish this metabolic shift is to repeatedly go from sauna to cold air and back. After a day or two your metabolism can become a roaring furnace and neither hot nor cold bothers you much. In addition you feel absolutely GREAT.

NOTE: If you feel dizzy, headachy, or otherwise unwell in the sauna, your system is probably too toxic, releasing wastes and other toxins from the tissues. Drinking LOTS of water can make you feel better quickly. Water is important when using the sauna anyway. In a DRY sauna it is difficult to gauge how much you are sweating because it dries up so fast. Drink enough to flush your system, not just enough to make up for sweating.

- **Solitude.** I enjoy and am most relaxed when there are lots of people at Valley View. There are many people, of course, who prefer solitude and quiet the best. Weekdays in the winter months are quiet, peaceful and beautiful. You might even have the place to yourself.

OLT Member Daniel B. Flemming, D.C.

New Faces Around Here

OLT has happily welcomed several awesome individuals to the staff over the last year. Cherrye, Scott, Dave, Mike and Jack have all brought wonderful energy into the mix! Happy trails to Susan, Lisa and Jamie who are no longer working here. Here's what Dave has to say about his new job:

"Employment opportunities here in the northern valley are scarce and I count myself lucky to have found a good neighbor for an employer; one that truly values the skills that I bring to work with me. I took a Visitor Services position at Orient Land Trust as a second job not only because I needed the money, but also because I admire the nonprofit mission of preserving the northern San Luis Valley for future generations. I look forward to my shift at OLT for the opportunity that it gives me to meet more people and make new friends. I marvel daily at the diversity of the guests that I assist at the Valley View Welcome Center. Big and small, young and old, people of



Stream coming off Top Pond

differing political persuasions and from every color of the human rainbow come to OLT for a healthy dose of low-impact, clothing-optional recreation that obviously improves their quality of life. They all smile and agree with me when I check them in and repeat to them the slogan found on the plaque above my desk, "Valley View Hot Springs-Relax you're here!" Just about every first-timer that I've met at OLT drops back in to say "Thank you!", looking rejuvenated and vowing to return again soon. It's great to deal with so many satisfied customers! But, mostly, I feel blessed to work my shift at OLT confident that every admission fee, lodging payment

and donation that I collect is contributing to the maintenance of a fragile hot springs and their surrounding ecosystem; a magnificent and rare living organism that truly deserves to be respected and cherished for the wonder-filled place that it is."

Take advantage of lower off-season rates between now and April 31... another reason winter is a great time to be at Valley View!

While member levels will increase, admission and accommodation fees will not go up for 2012. That's three years of entry fees staying the same!

We wish to thank all of our wonderful contributors who make it possible for Orient Land Trust to fulfill its mission and continue to protect this beautiful part of the world.

We gratefully acknowledge the people below who are current donor members as of September 30, 2011. We apologize to any current members who wish to be recognized but were left out, or who appear below but wish to remain anonymous. Please contact us if you would like to change your public status.

Guarantors

Ted & Shannon Peck

Philanthropists

Ben & Mary Eiseman, David & Mary Beth Kopec, Karen McLaughlin & Mark Schubin, Donald & Carolyn Neeper, Jim & Carol Melcher (volunteer)

Benefactors

Jeff Baysinger, John Belskis & Elizabeth Sweeney, Judy & Peter Carroll, Kenneth Coombs, John Dever, Sam Duncan, Bill & Amy Harrington, Catherine Harrison, Harold & Norby Pratt (Board), Shannon Family, Jay Sims (host), Fred Smith, Rae Marie & Marion Stelts, Keven VanKoughnet & Doug Packard, Robert Weisbrod (staff)

Sponsors

Bill & Elaine Agee (hosts), Robert & Judy Anderson, Ken Bull, David Cherry, Kristina Cizmar, Gary Clough, Michael & Carol Craigie, Robert & Victoria Cramer, Jeff & Christine DeChristopher, Jim & Carroll Ann Donaldson, Joe Eaglesfether, Julie Entwistle, Essen Family, Mark Flora & Sally Stevens, Ron Foster & Nicole Haberberger, Laurence Hall, Sandra Hayes (staff), Gary & Karen Hearing, Allen Heggen, Martin & Jane Jolley, Richard & Susan Jones, Frank & Linda Kadinger, Karbler Family, Kieffer Family, Veronica LaRoche, John David & Mary Ann Longwell, Art Martini, Bill Morris & Billy Joe Herrera, Preston Newell, Laura & Ewan O'Leary, Don O'Malley & Theresa Doi, Carl & Jeanne Patton, Darrin Pyle & Brian Gansmann, Joseph & Jeana Ruhl, Paul Schmidt & Mark Brown, Rick Seeger & Judy Harrigal, Shawn & Kasha Sowden, Mark & Sally Tanner, Torrez Family, Larry & Renée Varys, Bud & Suzanne Williams, Charles Zeis

Patrons

Greg & Lucy Achenbach, Stephen & Lori Allegar, Dave Allured, John & Karen Ashton, Eva & Madeline Avjean, Chuck Barton, Barton Family, John Behrendt & Laura Bachus, Judith Bonsignore & Bill Bliesath (hosts), Jeff Bobka, J. Ron Booth, Bo Johnson & Jean Bormett, Becky & Arthur Bragg, Bucklin Family, Jimmie Burke, Chris Campbell, Carolyn Caplan, Harvey Castro & Margot Levy, Cendo-Hamner Family, Fred & Terri Clauss, Chuck Custer, William Dake & Marty Newport, Kathe Davis & Terry Barnett, Levy-Dodge Family, John Eiseman (Board), Carol Adrienne Elvington, Julie Faber, Ronnie & Talonda Finch, Don & Susan Fishburne, Jennifer & Dennis Fleming, Glenn Foote, Germaine Fraley, Anna Frank & Colin West, Marilynn Freeman & Kelly Kindig, Mike Gacek & Joan Yaeger, Susan Garner, Gershkoff Family (volunteer), John & Cheryl Ghrist, Bruce Gillen, Gerald Girten, William Roy Glaser & Marsha Gimla, Grady Family, Hall Family, John & Kenda Hallinan, Harris Family, Harvey Family, Debra Hoffman (volunteer), Karen Hunter, Dan Jones (Board), Jones Family, Naomi Wolinsky & Nicole Jordan, Jan Kabili & John Lorenz, Jerry & Linda Kaiser (volunteer), Marilyn Kaub, Deborah King & Daniel Toth, Phil Kirk & Ann Newcomb, Chet & Chelan Klecha, Koprowicz Family, Koski Family (hosts) John Lavalley & April Lee, Barbara Lavender, John Law, Robert & Kimberly Leach, Kami Lichtenberg & Will Christy, Simon Lipstein, James & Mary Ann Mackey, Nell Maguire & Jim Neill, Gail Marcus & Michael Klahr, Suzanne Marie & Eric Flink, Robert Maritt, Michael Martin & Gretchen Malone, Myron McClellan & Lawrence Phillips, McGuire Family, Charles Meredith, Monica & Gilbert Miceli, Kelli & Jerry Marko, Larry Mullins & Kitty Wooldridge, Doug Neese, Mary Neff, Christine & Cierra Nusbaum, Jessi Nusbaum, Michael & Barbara O'Brien, Thomas O'Byrne, Elizabeth Oehler & Leigh Ann Gauntt, Adrian & Ami O'Leary, Michael & Jeri Orlans, Don Palermo & Tammy Drumright, Paul & Denise Palin, Peters Family, Kari & Mike Pokorny, Bruce Poster & Kathy Seidl, Mark & Mary Price, Ken & Pixie Raich, Deborah & David Riggle, Rivers Family, Aaron & Katherine Rodgers, Nancy Ruegg, Fred & Yvonne Rupp, Scott & Sue Ryplewski, Heidi Saltzman & Robin Dusharm, Dean Schneider, Uwe & Karen Schroeter, Gary & Barbara Shannon (hosts), Shell Family, Sondra Singer & Cathy Runkel, Smilack Family, Todd & Stephanie Smith, Juliet Smith, Elliot Smith & Lisa Barlow, Greg & Andrea Stack, John & Dylan Standish, Trevor Stone, Bianca Storlazzi, Bill Stough, Rich & Nancy Stromer, Earl Sutherland, Thomas Tesson, Michael & Rebecca Thompson, Mike & Kristin Tully, Chris Valentini, Gary & Katherine Van Houten, Oscar Voss, Ken & Kathy Waesche, Richard Ward, Warley-Ho Tseung Family, Jim & Pamela Wear, John Weber, Martin Weinberg, Rob Whiting, Bruce Williams, Martha Woods & Edward Glasser, Erika Zimmerman & Chad Delzell, Paul Zoric & Margaret Pzenny (Board)

Supporters

Diana Adair & Jason Grundhauser, Kelly Ammann, Mark & Stacy Anderson (volunteers), William Anderson, Jr., Bill & Ann Anselment, Heather Anthony, Jim Barber, Richard Barr & Kathleen Baughman, Sam Bauman & Bianca Giura, Beck Family, Fredi Beckett, Bob Bers, Shawn Best, Randy Bimestefer & Rae Riedel, Terry & Patricia Blackmon, Bruce Blodgett & Bonnie Orkow, Trosten-Bloom Family, Joey Blue, Michael Bonamer, Janice Boxer & Dave Culp, Pete & Barb Brayton, Brenckle Family, Bucklin-Carsh Family, James Burbank & Laura Berg, James Byrnes, Frank Cencula, Sue & Michael Clark, Corine Clark & Derek Hubbard, Carla Clements & Laura Plas, Joanne Coupe & Johann DeVries, Claude & Margaret Dean, Tom Decker, Suzanne Degross, Patrick DeHerrera, Dempsey Family, Robert Dillon, Jessica & Denny Duboe (Board) Alan Ellison & Harry Levy, Glenn & Meryl Ennis, April Fair, Farrokh Fathi, Randy Fischer & Mary Siems, Daniel Flemming, Franz Family, Susan Frederick & Mark Daily, Frickel Family, Robert Frost & Sheila Hearn-Frost, Mike Gallavin & Carrie Tremblatt, Mike Gefell & Alison Hazel, Gary Gilbert & Marcia Goldin, James Glidewell & Betty Kennedy, Terry & Sage Godfrey, Shana Gregory & Stephen Goss, Jesse & Karen Gwidt, William Haas & Denise Iten, Stacy & Forrest Hammond, Dale & Eileen Hargrave, Greg & Pam Harper, Thomas Harrison, Walter Herter, Louise Hiatt, Jim Hinde & Tonie Baxter, Terry & Dianne Hirschlieb, Lucinda Spencer & Frank Hodge, Donald Holik & Deborah Leighton, Wayne Husband, Rob & Catherine Hutchinson, Bob Inda, Carol & Therese Inman, David Johnson, Carter Jolley, Chris Jones, John & Sarah Kangerga, Kelley Family, Sarah Kornhauser & Adam Buehler, Robert Kucirek, Dean & Diane Levi, David Llanos & Gregory Kennedy, Bob Long, Ellen & Walt Lukasik, Jonathan Major & Andrew Taylor, Robert Mandzi & Elaine Sullivan, John & Suzanne Mariner, Jennifer Martin & Doug Rolley, Doug Mason, Gordon & Karen Matheson, Leon Mazeika, Ray McCarus, William McGrath, Joe McGregor, Jack McKenzie, Judith Mohling, Moloney-Walpole Family, Jason Montoya & Cathy Jiron, Richard Moraski, Morsicato Family, Seth Jacob & Myra Murphy-Jacob, Cindi & Jim Myers, Penny Nelson & Steve Sator, John Norton & Kathryn Adams, Bruce Nusbaum, Timothy Parnell, Clifford Patrick, Dan & Rozella Payne, Nathan Good, Lowell & Susanne Peck, Robert & Jane Penny, Charles Perry, Pam & Ron Peters, Scott Peterson, Alston Pinter, Cheryl Priest & Bailey Lillard, Jan & John Redick, Mike Reed & Susan Keeton, Mira & Justin Rookey, Rosenblum Family, Rusch Family, John Weber & Claire Ryder, Doug Salmi & Rona Hawn, Sammons Family, Leslie Sarver, Woody Wang & Susan Schmidt, Scott-Gonzales Family, Searns-Preston Family, Seitz Family, Paul Seward & Leslie Gordon, Jolynn & Tom Shanley, Jeff Shaw & Suzanne Hernandez, Patrick & Martin Shea, Rocky & Stacy Shockley, Smith Family, Patrick & Rachel Speer, David Spenny & Debrah Veeder, Bill & Catherine Stamey, B.J. & Joe Stapen, Nancy Starkweather, John Sulyak & Angela Cook, Stuart Sutton, Randy Sweat, Shelley Terrill, Tison Family, Karen Todd, Mariza Vazquez, Vern & Jarla Vobejda, Vicki & Scott Walker, Lonnie & Tim Wallace, Douglas & Taber Ward, Ed Watson, Weber Family, Weinberg Family, Rob Werge & Charlotte Miller, Wheeler Family, Grant Whittle & Rochonne Breneman, Mark Willard, Jeff Willet, Dennis Williams & Mary Vanderwall, Ann Williams, Alison Wilson, Quin Anthony Wright, Brad Wright, Wright-Fair Family, Mike & Chris Young, Mark & Zach Zecha, Jennifer & Tim Zedalis, Michael Zobbe

Friends

John Ackley, Chris & Dave Ambors, Brian Anderson, Gregory Arts & Cathy Earl, Susan Baker, Ballard Family, Angela Bassano & Tony Groszewski, Ken & Joann Beegles, Suzie Benton & Tim True, David Berry, Mary-Frances & Andrew Bigoney, Ralph Black, Art Blanchard, Michael Blevins (Board and host), Grady & Anne-Marie Boles, Jessica Bonasso & C.B. Dushane, Angela Bowman & Phillip Hathaway, Joe & Lisa Bradley, Sugandha Brooks, Richard Buchanan, Margaret Burkesmith & Douglas Leshay, Ron Chambliss, Philip & Brenda Chappell, Gerald Charter, Jennifer & Michael Chiappini, Dennis Chorpenning, Chu-Stevens Family, Ann & Dave Connor, Danyel & Robert Cook, John Cornelius, Mark Cuny, Mike Dardi, Peter Degnan & Annette Hanson, Devera Denker, Ed & Cynthia Devlin, Brian Dewitt & Bryan Taylor, Gerald Armstrong, Kether Diercks, Denise & Steve Duker, Megan Eggers, Gordon Eland, Larry & Jeannette Ewing, Felt Family, Shawn Frizzell, Alan & Connie Gallagher, Sheila Gentry, Gilstrap Family, Vito & Dorothy Giorgio Jr, Nina Gonzalez & Jacob Mertes, James & Lucy Goodridge, Goring Family, Mary Grasso, Linda Green, Gus & Renee Gustafson, Bert Hand, Ian Hawkins, Bernie Heissfeld, Jaime & Russ Henry, Walter Henze & Sarah Kaiser, Mark & Emerald Herzog, Robert & Rosslyn Hicks, Jason Hiester & Angelina Tacchia, Michele Howard & Michael Millner, Terry & Gary Jennings, Karen Johnson, Kimberly Johnson & Doug Billings, Joetta Johnson & Lynn Scholl, Johnson-Buehre Family, Christiana & Jamie Jones, Florence & Mike Jones, Dave & Tammy Kaiser, Tom Kamholz, Stephanie Kelly, Keith & Marla Kent, James & Janet Kimble, George Kitchin & Donna Bartlett, Mark Kneisley, Emily Knowles, Lee & Ed Lambert, Eric & Kara Larson, Randy Lawrence & Lis Brola, Sally Liu, Shannon & Carrie Logan, Jenna Long, Julie & Jim Longwell, Dusty & Roger MacDougall, Monika Magenheimer, Bob Mandich, Mark Maslyn, Amy Mayo & Russell Cory, Brian McCullough, Hilda McLaughlin, Jeff Messerschmidt, David & Leah Millis, Richard & Francine Minogue, Moran Family, Eleanor Mueller, Angela Myers, Mike Nagle, Duane & Mary Beth Netz, Melody Newkirk, Mary Newton, George Nicholls, Faith Ann Nielander & Rick Talley, Cyndy & Ron Noel, Jack & Marilyn Nolan, David Offutt, William Olsen, Sam Pace, Leann Pape & Bob Thompson, Bob & Barbara Perkins, Erika Peterhoff, Pfennigs Family, Leigh Ann Phillips, Adi Pieper & Bettina Sellers, Penelope Powell & Christopher Johnson, Ann Powell & Rolf Hebelstret, Tom & Ilene Preble (volunteers), Prior Family, Jeff Regan, Laura Reiber, Richard Replin & Elissa Stein, Ann & David Rick, Keith & Deborah Robinson, Jacqueline Rock, David Root & Craig Libelt, Carlton Roznoski, Marcia & John Samore, Jane & Norman Sampson, Judy Schatzberg, Tony Schramm, Carolyn Seidel, Shook Family, Jeanette Sims, Jamie Sims, Don & Anne Skinner, Costen Aytes & Elizabeth Slokar, Brenda Smith, Steve & Marilyn Sprowles, Erik Stark, Bob & Ruth Steen (volunteers), Cathy Steinberger & Eric Peterson, Lori Stephenson & James Hixson, Ray & Isolde Stewart, Jill Stoll & Richard Waltzman, David Sullins & Susan Biggs, John & Rebecca Sutjak, Roy & Kathryn Swigart, Bonnie Swyers, Bryan Thayer, Jason Thies, Fred Todd, Laura Vance, David & Vickie Vogel, Martin & Janet Ward, Jessica & Nathan Warren, John Webb & Patricia Purcell, Doug Wessen, Jay & Christina White, Alan Williams, Steve Winn, Ramone Yaciuk, Jonathan Yates, David Yeats & Sheri Thompson, Tom Zieber, James & Carrie Zovluck

Orient Land Trust
Valley View Hot Springs
PO Box 65
Villa Grove, CO 81155

Address Service Requested



Notes from the Executive Director
Suzanne Ewy, Executive Director

Respect

We feel that that in order to truly respect the trees, the wind, the water and the animals, we must start with respecting each other. Many of you have noticed that we are expecting compliance with our longstanding rules, including compliance with all fire and smoking bans due to the present drought, keeping glass away from the pools, making sure children are supervised, keeping alcohol use in control, and most importantly, behaving with respect towards other visitors and the OLT staff. We do this in order to ensure a wonderful, safe experience for every visitor. And it's working! We have received numerous appreciative comments this year.

Volunteers

There is just not enough we can say about our volunteers. Camp Hosts, Discovery Hosts,

Bat Hosts, Astronomy Hosts, Geology Hosts. You name it, we have the best. This year was a case in point. Camp Hosts Bill Bliesath and Jude Bonsignore helped plant and maintain the new trees along the Hot Springs Creek and the Everson Ranch Reservoir. Camp Hosts Barb and Gary Shannon were instrumental in protecting our visitors when a relocated bear and her cub wandered into the village. Discovery Hosts Bill and Elaine Agee stayed at the Ranch House and, among a jillion other things, transformed that area into an oasis. They also keep the OLT staff certified in CPR and First Aid. Geology Host Jay Sims helped us with geology research, leading tours, and GIS research. Bat & Discovery hosts Bob and Ruth Steen shepherded us through bats, bears and busy times. Camp Hosts Katie, Jess, Phoebe and Eli Koski kept us entertained and in line. Astronomy Hosts Radar Baker, Dave Karave, Mark Cunningham, and Tom Preble kept our heads in the stars while Cookie Host Ilene Preble kept cookies in our tummies. Camp Hosts Lori and Scooter Fleuter simply graced the place with their lovely,

continued on page 5